

# Multiple Songs On One Page

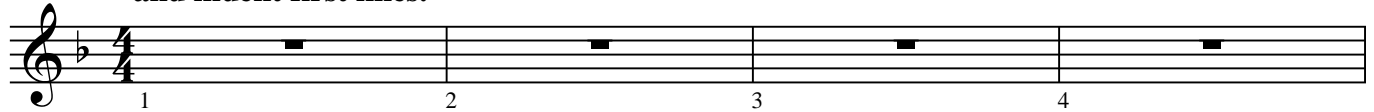
Go to Document > Document Options and change the following settings:

Clefs: Uncheck "Display Courtesy Clef at End of Staff System"

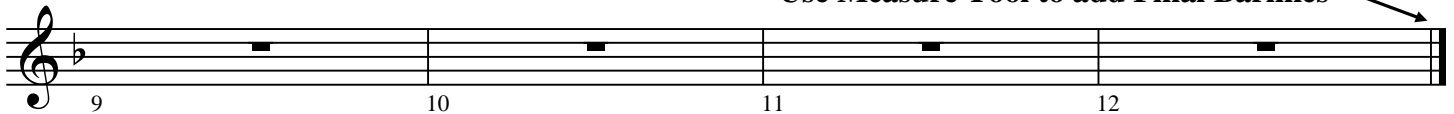
Key Signature: Uncheck "Display Courtesy Key Signature at End of Staff System"

Time Signature: Uncheck "Display Courtesy Time Signature at End of Staff System"

Arrange the Measure Layout with the Selection Tool (or Mass Edit) - Lock Layout so measures don't reflow. Use Page Layout > Systems > Edit Margins to space systems and indent first lines.

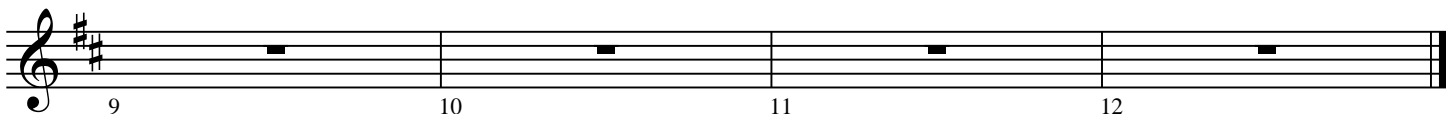
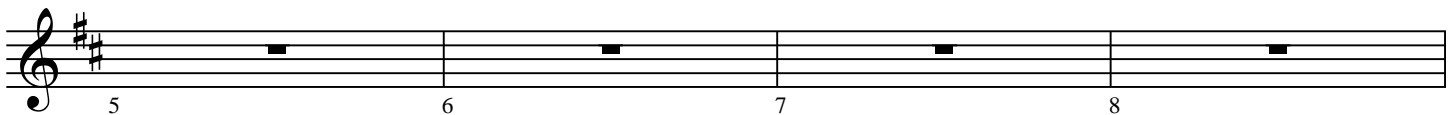
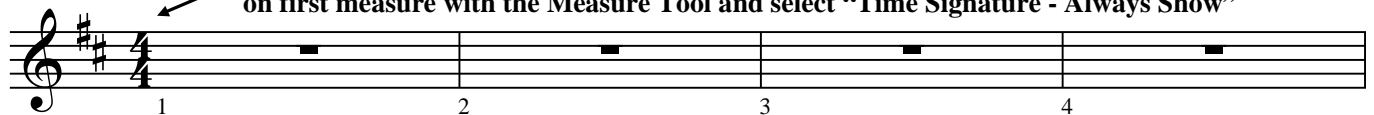


Use Measure Tool to add Final Barlines



Set Time Signatures, Key Signatures and Clefs for each song.

If Time Signature does not change from previous song, double click on first measure with the Measure Tool and select "Time Signature - Always Show"



Measure Numbers - If used, create a separate Measure Number Region for each song.

